

# G25F 电接头测试快速连接器

一站式连接方案

低压检测 | 易于更换 | 经济型接头 | 型号齐全 | 操作快捷 | 密封材料多样 |

G25F系列作为电接口的气密测试，需要通讯/电测试请移步到E10系列。通过涨紧密封圈的方式密封电接口的内壁。接头整体比较短，防止接头本身长度及自重影响密封性。



## 电接头测试连接方案

- \* 滑套锁住，防弹出
- \* 主体较短，防止侧翻
- \* 把手操作，简单，省力，自锁，防回弹
- \* 手柄可旋转，方便操作
- \* 铝合金主体，轻便坚固
- \* 自调节弹簧，延长使用寿命

## G25F 系列快速连接器的特性

### 1, 手柄式操作

操作简单，对准电接口，90°折下手柄即可实现密封连接

### 2, 涨紧式密封

密封可靠，密封圈易于更换，便于维护

### 3, 四种版本选择

G25F-DK大电流针孔类、G25F-DJ大电流夹片类、G25F-T探针类、G25F-JP小电流夹片类

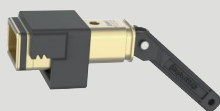
### 4, 多种材料选择

接头外壳主体采购航空铝材，POM，尼龙加玻纤，树脂等。轻便耐用，保证连接器寿命的同时，减轻操作负荷

### 5, 气动版本G15F

G15F为自动化或是气动连接场合设计，通过气动驱动来实现电接口的快速密封

部分主体展示



G25F-DJ517419R6.7



G25F-T400210R3



G15F-T300210R3



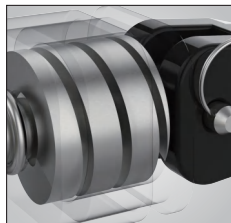
G15F-JP318305R7.3-GF

# G25F 电接头测试快速连接器

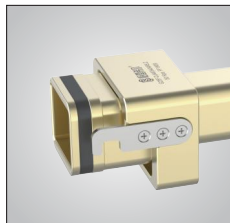
一站式连接方案

低压检测 | 易于更换 | 经济型接头 | 型号齐全 | 操作快捷 | 密封材料多样 |

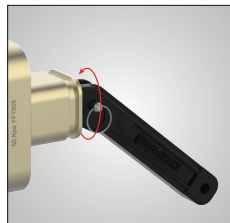
## G25F 快速连接器优点与特点



自调节弹簧：  
根据孔径自动调节  
密封压力，延长使  
用寿命



滑套锁紧：  
滑套锁住，防弹出



可旋转手柄：  
手柄可旋转，方便操  
作

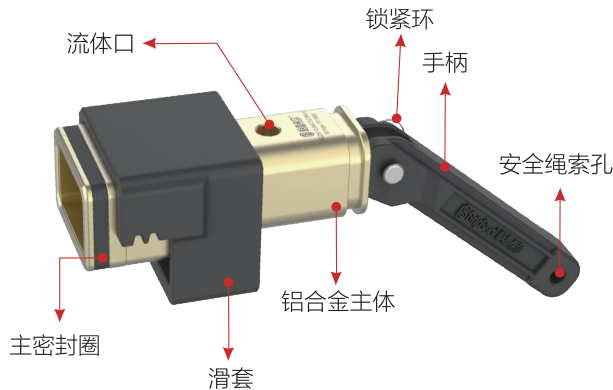


铝合金主体：  
轻便耐用，减轻操作  
负担



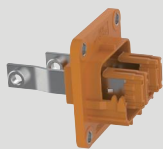
把手操作：  
简单，省力，自锁，  
防回弹

## G25F 快速连接器的规格与参数

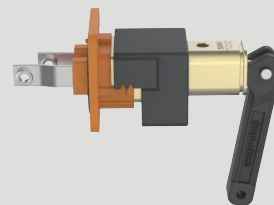


最大操作压力	从真空到50 Kpa
密封范围	根据电接口尺寸定制
流量接口	M5,G1/8
主体材料	铝合金
主密封圈	氯丁橡胶/硅胶
操作温度	-20°C至120°C

### G25F 操作演示



1. 将接头前端密封圈放入待密封的电接头内



2. 滑套锁住，折动把手，形成密封

# G25F 电接头测试快速连接器

一站式连接方案

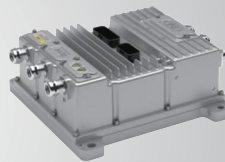
低压检测 | 易于更换 | 经济型接头 | 型号齐全 | 操作快捷 | 密封材料多样 |

## 应用案例：

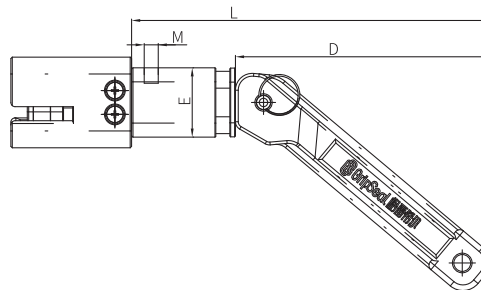
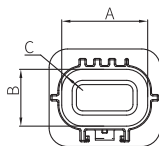
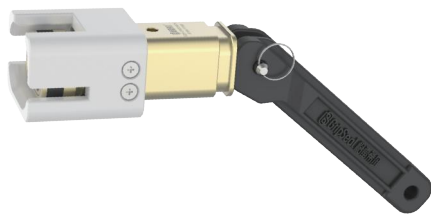
新能源PACK包体测试  
电机控制器泄漏测试



新能源电池PACK



电机控制器



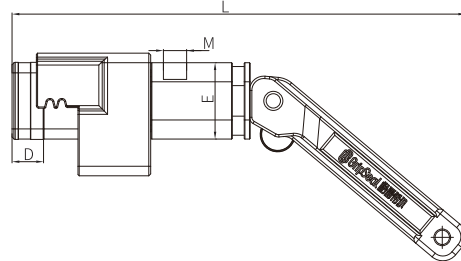
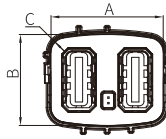
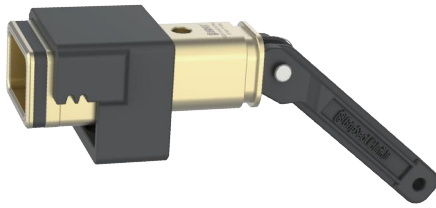
## G25F-JP小电流夹片类

产品型号	产品内长A	产品内宽B	产品圆角半径C	尺寸D	尺寸E	尺寸L	流体口M	最大承压	主密封圈包**
G25F-JP275183R6.6	27.5	18.3	6.6	90.6	24.7	127.6	M5	50Kpa	SG25F-JP275183R6.6
G25F-JP280254R6.6	28.0	25.4	6.6	90.6	24.7	127.6	M5	50Kpa	SG25F-JP280254R6.6
G25F-JP281188R6	28.1	18.8	6.0	90.6	24.7	127.6	M5	50Kpa	SG25F-JP281188R6
G25F-JP285175R6.8	28.5	17.5	6.8	90.6	24.7	127.6	M5	50Kpa	SG25F-JP285175R6.8
G25F-JP287194R6.2	28.7	19.4	6.2	90.6	24.7	127.6	M5	50Kpa	SG25F-JP287194R6.2
G25F-JP290192R6.7	29.0	19.2	6.7	90.6	24.7	127.6	M5	50Kpa	SG25F-JP290192R6.7
G25F-JP291203R8.3	29.1	20.3	8.3	90.6	24.7	127.6	M5	50Kpa	SG25F-JP291203R8.3
G25F-JP298184R6.3	29.8	18.4	6.3	90.6	24.7	127.6	M5	50Kpa	SG25F-JP298184R6.3
G25F-JP330301R8.9	33.0	30.1	8.9	90.6	24.7	127.6	M5	50Kpa	SG25F-JP330301R8.9
G25F-JP330193R5	33.0	19.3	5.0	90.6	24.7	127.6	M5	50Kpa	SG25F-JP330193R5
G25F-JP330249R10.6	33.0	24.9	10.6	90.6	24.7	127.6	M5	50Kpa	SG25F-JP330249R10.6
G25F-JP302207R7.1	30.2	22.0	7.1	90.6	24.7	127.6	M5	50Kpa	SG25F-JP302207R7.1
G25F-JP303214R7.4	30.3	21.4	7.4	90.6	24.7	127.6	M5	50Kpa	SG25F-JP303214R7.4
G25F-JP304201R7.5	30.4	20.1	7.5	90.6	24.7	127.6	M5	50Kpa	SSG25F-JP304201R7.5
G25F-JP365296R8.0	36.5	29.6	8.0	90.6	24.7	127.6	M5	50Kpa	SG25F-JP365296R8.0
G25F-JP379224R7.4	37.9	22.4	7.4	90.6	24.7	127.6	M5	50Kpa	SG25F-JP379224R7.4
G25F-JP382230R7.7	38.2	23.0	7.7	90.6	24.7	127.6	M5	50Kpa	SG25F-JP382230R7.7
G25F-JP403194R6.2	40.3	31.9	6.2	90.6	24.7	127.6	M5	50Kpa	SG25F-JP403194R6.2
G25F-JP429254R10.7	42.9	25.4	10.7	132.1	24.7	127.6	M5	50Kpa	SG25F-JP429254R10.7
G25F-JP311298R9.4	31.1	29.8	9.4	132.1	32.0	127.6	G1/8	50Kpa	SG25F-JP311298R9.4
G25F-JP313313R7.3	31.3	31.3	7.3	132.1	32.0	127.6	G1/8	50Kpa	SG25F-JP313313R7.3
G25F-JP318305R7.3	31.8	30.5	7.3	132.1	32.0	127.6	G1/8	50Kpa	SG25F-JP318305R7.3
G25F-JP330330R8	33.0	33.0	8.0	132.1	32.0	127.6	G1/8	50Kpa	SG25F-JP330330R8
G25F-JP368318R9.9	36.8	31.8	9.9	132.1	32.0	127.6	G1/8	50Kpa	SG25F-JP368318R9.9

# G25F 电接头测试快速连接器

一站式连接方案

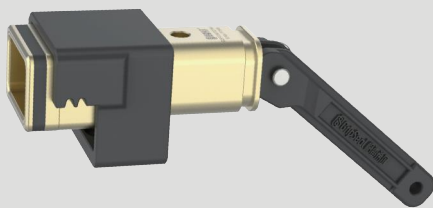
低压检测 | 易于更换 | 经济型接头 | 型号齐全 | 操作快捷 | 密封材料多样 |



## G25F-DJ大电流夹片类

产品型号	产品内长A	产品内宽B	产品圆角半径C	尺寸D	尺寸E	尺寸L	流体口M	最大承压	主密封圈包**
G25F-DJ378338R4.1	37.8	33.8	4.1	21.0	24.7	184.1	M5	50Kpa	SG25F-DJ378338R4.1
G25F-DJ387327R4.6	38.7	32.7	4.6	13.2	32.0	190.1	G1/8	50Kpa	SG25F-DJ387327R4.6
G25F-DJ392340R5.3	39.2	34.0	5.3	20.8	24.7	184.1	M5	50Kpa	SG25F-DJ392340R5.3
G25F-DJ393312R6.8	39.3	31.2	6.8	13.2	32.0	190.1	G1/8	50Kpa	SG25F-DJ393312R6.8
G25F-DJ400319R7.2	40.0	31.9	7.2	13.2	32.0	190.1	G1/8	50Kpa	SG25F-DJ400319R7.2
G25F-DJ418338R3.9	41.8	33.8	3.9	9.2	32.0	194.1	G1/8	50Kpa	SG25F-DJ418338R3.9
G25F-DJ429328R9.2	42.9	32.8	9.2	27.0	32.0	194.1	G1/8	50Kpa	SG25F-DJ429328R9.2
G25F-DJ434358R4.1	43.4	35.8	4.1	13.0	32.0	195.7	G1/8	50Kpa	SG25F-DJ434358R4.1
G25F-DJ445391R8.3	44.5	39.1	8.3	13.0	32.0	192.1	G1/8	50Kpa	SG25F-DJ445391R8.3
G25F-DJ463404R8.2	46.3	40.4	8.2	16.3	32.0	194.1	G1/8	50Kpa	SG25F-DJ463404R8.2
G25F-DJ456354R5.3	45.6	35.4	5.3	13.2	32.0	191.8	G1/8	50Kpa	SG25F-DJ456354R5.3
G25F-DJ466379R4.1	46.6	38.9	4.1	16.3	30.0	194.1	G1/8	50Kpa	SG25F-DJ466379R4.1
G25F-DJ467327R4.6	46.7	32.7	4.6	13.2	32.0	190.1	G1/8	50Kpa	SG25F-DJ467327R4.6
G25F-DJ509414R6.3	50.9	41.4	6.3	15.1	32.0	201.7	G1/8	50Kpa	SG25F-DJ509414R6.3
G25F-DJ517419R6.7	51.7	41.9	6.7	15.0	32.0	199.0	G1/8	50Kpa	SG25F-DJ517419R6.7
G25F-DJ516437R7.5	51.6	43.7	7.5	15.0	32.0	199.1	G1/8	50Kpa	SG25F-DJ516437R7.5
G25F-DJ523417R8.5	52.3	41.7	8.5	15.0	32.0	199.1	G1/8	50Kpa	SG25F-DJ523417R8.5
G25F-DJ554464R5.7	55.4	46.4	5.7	13.0	32.0	212.9	G1/8	50Kpa	SG25F-DJ554464R5.7
G25F-DJ554470R9	55.4	47.0	9.0	13.0	32.0	197.1	G1/8	50Kpa	SG25F-DJ554470R9
G25F-DJ570470R9	57.0	47.0	9.0	13.2	32.0	213.1	G1/8	50Kpa	SG25F-DJ570470R9
G25F-DJ587477R10.6	58.7	47.7	10.6	13.0	32.0	212.9	G1/8	50Kpa	SG25F-DJ587477R10.6

针对锯齿型电插口



针对挂耳型电插口



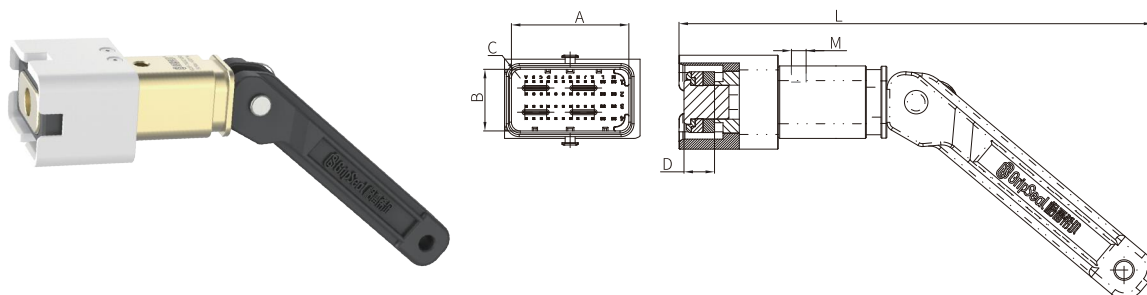
注：1.内孔的深度必须足够，以便放入连接器前端的密封圈。  
2.主密封圈包里面包含可以更换5次的材料。

# G25F

## 电接头测试快速连接器

一站式连接方案

低压检测 | 易于更换 | 经济型接头 | 型号齐全 | 操作快捷 | 密封材料多样 |



### G25F-T探针类

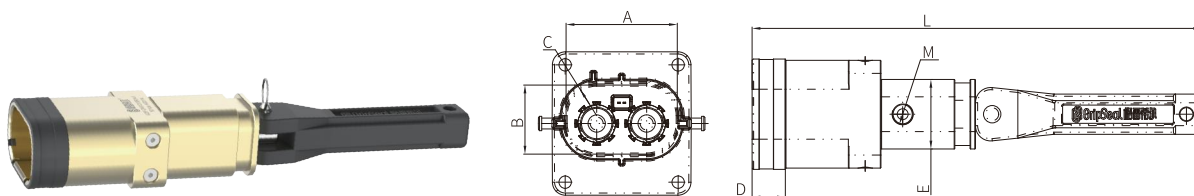
产品型号	产品内长A	产品内宽B	产品圆角半径C	针数	尺寸D	尺寸L	流体口M	最大承压	主密封圈包**
G25F-T186183R4.3	18.6	18.3	4.3	6	23.5	166.1	M5	50Kpa	SG25F-T186183R4.3
G25F-T216146R3.6	21.6	14.6	3.6	4	11.4	150.2	M5	50Kpa	SG25F-T216146R3.6
G25F-T217119R4	21.7	11.9	4.0	12	9.0	150.4	M5	50Kpa	SG25F-T217119R4
G25F-T260080R1.8	26.0	8.0	1.8	24	9.9	150.2	M5	50Kpa	SG25F-T260080R1.8
G25F-T266148R4.3	26.6	14.8	4.3	12	11.0	149.5	M5	50Kpa	SG25F-T266148R4.3
G25F-T267152R4.3	26.7	15.2	4.3	12	13.6	157.2	M5	50Kpa	SG25F-T267152R4.3
G25F-T278244R2.8	27.8	24.4	2.8	60	13.5	168.5	M5	50Kpa	SG25F-T278244R2.8
G25F-T280280R8	28.0	28.0	8.0	/	14.7	172.9	M5	50Kpa	SG25F-T280280R8
G25F-T281109R3.5	28.1	10.9	3.5	16	15.4	153.6	M5	50Kpa	SG25F-T281109R3.5
G25F-T284206R4.7	28.4	20.6	4.7	10	13.8	161.4	M5	50Kpa	SG25F-T284206R4.7
G25F-T296146R3.6	29.6	14.6	3.6	6	11.4	150.2	M5	50Kpa	SG25F-T296146R3.6
G25F-T300210R3.0	30.0	21.0	3.0	32	10.4	161.4	M5	50Kpa	SG25F-T300210R3.0
G25F-T318104R3.5	31.8	10.4	3.5	/	11.2	150.2	M5	50Kpa	SG25F-T318104R3.5
G25F-T319184R4.1	31.9	18.4	4.1	12	26.3	165.9	M5	50Kpa	SG25F-T319184R4.1
G25F-T319204R4	31.9	20.4	4.0	32	10.8	169.6	M5	50Kpa	SG25F-T319204R4
G25F-T362142R7.1	36.2	14.2	7.1	14	11.1	153.7	M5	50Kpa	SG25F-T362142R7.1
G25F-T378164R6.5	37.8	16.4	6.5	20	11.4	155.2	M5	50Kpa	SG25F-T378164R6.5
G25F-T400210R3	40.0	21.0	3.0	48	10.4	161.4	M5	50Kpa	SG25F-T400210R3
G25F-T404206R4.7	40.4	20.6	4.7	23	14.6	162.6	M5	50Kpa	SG25F-T404206R4.7
G25F-T428156R4.5	42.8	15.6	4.5	18	11.4	155.2	M5	50Kpa	SG25F-T428156R4.5
G25F-T406150R4.3	40.6	15.0	4.3	20	16.2	163.2	M5	50Kpa	SG25F-T406150R4.3
G25F-T432345R5.4	43.2	34.5	5.4	20	14.7	188.3	G1/8	50Kpa	SG25F-T432345R5.4
G25F-T500210R3	50.0	21.0	3.0	64	10.3	163.6	M5	50Kpa	SG25F-T500210R3
G25F-T548268R10	54.8	26.8	10.0	/	9.6	160.2	M5	50Kpa	SG25F-T548268R10
G25F-T550270R9.5	55.0	27.0	9.5	/	13.5	159.9	M5	50Kpa	SG25F-T550270R9.5
G25F-T556296R14.8	55.6	29.6	14.8	/	16.3	165.5	M5	50Kpa	SG25F-T556296R14.8
G25F-T564206R4.7	56.4	20.6	4.7	35	10.8	169.6	M5	50Kpa	SG25F-T564206R4.7
G25F-T600340R17	60.0	34.0	17.0	/	15.0	177.1	G1/8	50Kpa	SG25F-T600340R17
G25F-T660360R18	66.0	36.0	18.0	/	17.0	180.7	G1/8	50Kpa	SG25F-T660360R18
G25F-T675366R8	67.5	36.6	8.0	/	15.7	176.9	M5	50Kpa	SG25F-T675366R8
G25F-T790414R20.7	79.0	41.4	20.7	/	14.0	182.1	G1/8	50Kpa	SG25F-T790414R20.7

# G25F

## 电接头测试快速连接器

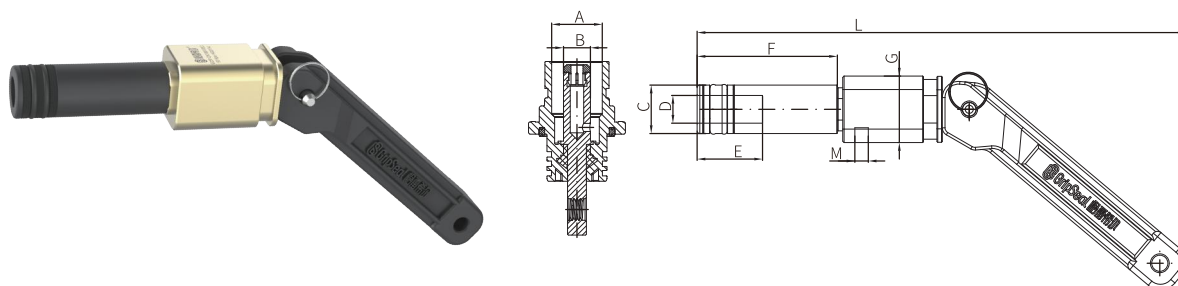
一站式连接方案

低压检测 | 易于更换 | 经济型接头 | 型号齐全 | 操作快捷 | 密封材料多样 |



### G25F-DK大电流多针孔（方形）

产品型号	产品内腔长A	产品内腔B	产品内腔圆角半径C	尺寸D	尺寸E	尺寸L	流体口M	最大承压	主密封圈包**
G25F-DK496256R9.9	49.6	62.5	9.9	15.3	32.0	205.9	G1/8	50Kpa	SG25F-DK496256R9.9
G25F-DK500310R13.5	50.0	31.0	13.5	15.3	32.0	206.9	G1/8	50Kpa	SG25F-DK500310R13.5
G25F-DK502272R13.6	50.2	22.7	13.6	15.3	32.0	205.9	G1/8	50Kpa	SG25F-DK502272R13.6
G25F-DK512318R14.1	51.2	31.8	14.1	15.3	32.0	206.9	G1/8	50Kpa	SG25F-DK512318R14.1
G25F-DK522332R14.6	52.2	33.2	14.6	15.3	32.0	206.9	G1/8	50Kpa	SG25F-DK522332R14.6
G25F-DK525332R10.5	52.5	33.2	10.5	15.3	32.0	191.1	G1/8	50Kpa	SG25F-DK525332R10.5



### G25F-DK-C大电流单针孔（圆形）

产品型号	尺寸A	尺寸B	尺寸C	尺寸D	尺寸E	尺寸F	尺寸G	尺寸L	流体口M	最大承压	主密封圈包**
G25F-DK160091C	16.0	9.1	15.4	9.4	24.3	30.8	24.7	183.0	M5	50Kpa	SG25F-DK160091C
G25F-DK164080C	16.4	9.4	15.4	9.4	24.2	52.0	24.7	181.7	M5	50Kpa	SG25F-DK164080C
G25F-DK174080C	17.4	8.0	17.0	10.3	24.3	52.1	24.7	181.7	M5	50Kpa	SG25F-DK174080C
G25F-DK176100C	17.6	10.0	17.0	10.3	24.3	52.1	24.7	181.7	M5	50Kpa	SG25F-DK176100C
G25F-DK188100C	18.8	10.0	18.0	10.3	24.3	52.1	24.7	181.7	M5	50Kpa	SG25F-DK188100C
G25F-DK372326C	37.2	32.6	36.2	28.7	40.0	49.0	32.0	196.0	G1/8	50Kpa	SG25F-DK372326C